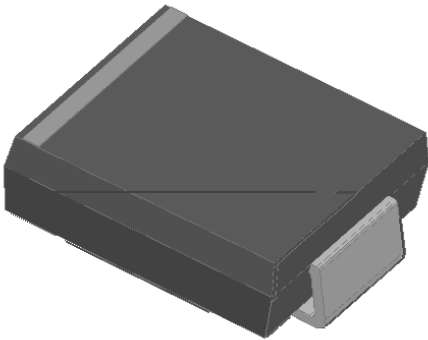




SSL34 THRU SSL310

RoHS
COMPLIANT

Surface Mount Schottky Rectifier

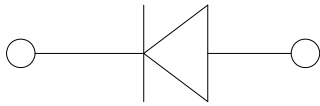


Features

- " *XDUGULQJ IRU RYHUYROWDJH SURWHFWLRO
- "/RZ IRUZDUG YROWDJH GURS /RZ SRZHU ORV
- " +LJK IRUZDUG VXUJH FDSDELQW\
- " +LJK IUHTXHQF\ RSHUDWLRQ
- "/RZ IRUZDUG YROWDJH GURS /RZ SRZHU ORV
- " 6ROGHU GLS f& SBU -(6' %

Typical Applications

-)RU XVH LQ ORZ YROWDJH KLJK IUHTXHQF\ L
- IUHHZKHHOLQJ '&'&DQJ SROWHUV\ SURWHF
- DSSOLFDWLRQV



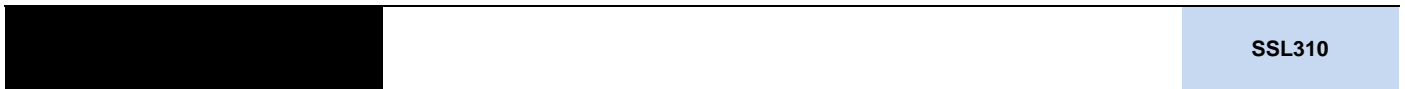
C

Mechanical Data

- " Package '2 \$% 6A&
- 0ROGLQJ FRPSRQG PHHWDPPDELQW\
- UDWLQJ 5R+6 FRPSOLDQW
- " Terminals 7LQSODWHG OHDGV VROGHUDEOH S
- DQG -(6' %
- Polarity: &RORU EDQG GHQRWH\ WKH FDWKRGH

Maximum Ratings

PARAMETER	SYMBOL	UNIT	SSL34	SSL36	SSL310
'HYLFH PDUNLQJ FRGH			SSL34	SSL36	SSL310
5HSHWLWLYH 3HDN 5HYHUVH 9ROVDJH		9		9y p y 0	
YHUDJH 5HFWLILHG 2XWSXW &XUUHQW	&XUUHQW	\$,*			
# +] VLQH ZDYH 5HVLVWDQFH ORDQ 7D					
)RUZDUG 6XUJH &XUUHQW 1RQ UHSHWLWLYH		\$			
# +] +DOI VLQH ZDYH F\FOH 7D ⁶⁰					
6WRUDJH 7HPSHUDWXUH	7VWJ			a	
-XQFWLRQ 7HPSHUDWXUH			7 p8'Q'O'HVV yÔ•% %p KH'UZ'L'V H'yÖ'V S'H'F L'I'L'H'G		



			Ta 1100		

1RWH 3XOVH WHVW X6 SXOVH ZLGK GXW\ F\FOH					
1RWH 3XOVH WHVW SXOVH ZLGK P6					



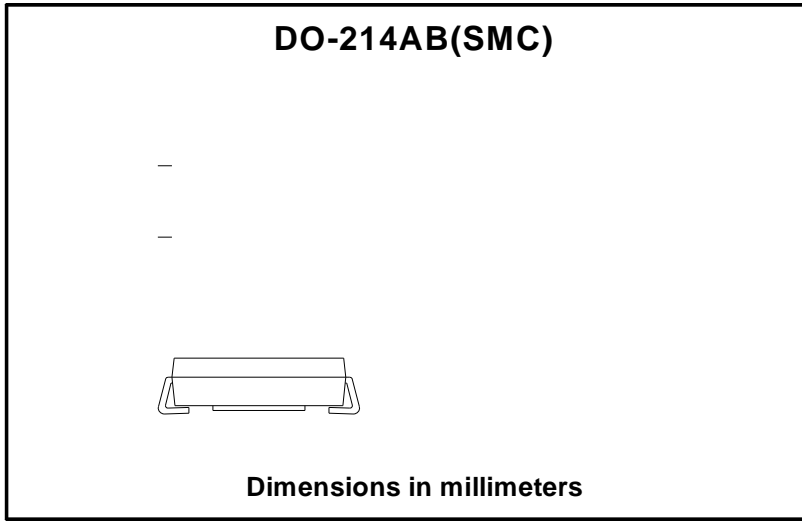
SSL34 THRU SSL310

Thermal Characteristics A 7D



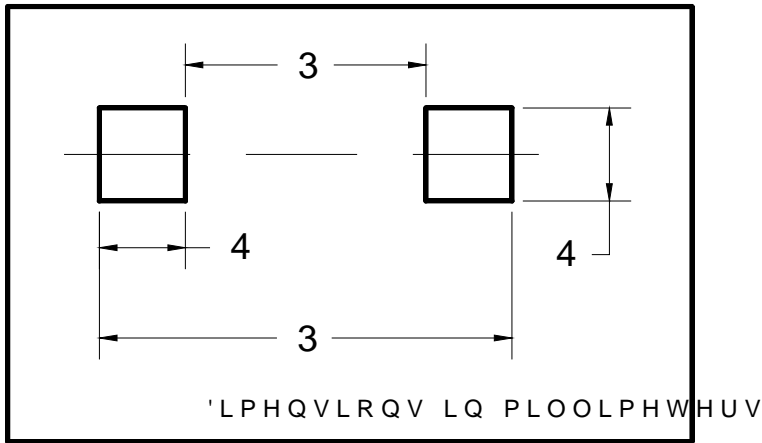
SSL34 THRU SSL310

vOutline Dimensions



'2	\$%	60&
'LP	0LQ	0D
\$		
%		
&		
'		
(
)		
*		
+		

Suggested pad layout



Dim	Typ
3	
3	
4	
4	



SSL34 THRU SSL310

Disclaimer

7KH LQIRUPDWLRQ LSHU ~~SRFH~~ ~~PHHGWL~~ QVMRU <DQJJKRX <DQJMLH (OHFWURQLF 7HFKQRO
ULJKW WR PDNH FKDQJHV ZLWKRXW KHRSURISXRWWHG HVSSHDHG KDWLHQ RWRLPSLURY
RU RWKHUZLVH

7KH SURGXFW OLVWHG KHUHLQ LV GHVHGHQWGRFEHTXLISEHZLWKRURGHLYLDFHWVWIDQG
HTXLSPHQW RU GHYLFHV ZKLFK UHTGLW KHKEJKO OXQFHWL RQ URH OZLDEK ZRWOGXFKUDHFWO
PHGLFDO LQVWUXPHQWV WUDQVSRUWDWLRQ XFXHLSH HGHV FWHURFVSDWELGRBODKMU V
GHYLFHV <DQJMLH RU DQIRQH RQ LWVOEMK DQJ OLVEXPHLWQRUWHGSRQVPEBJKHVHUV
RI VDOH

7KLV SXEOLFDWLRQ VXSHUVHGHV UHSDXISVIDHGG IRURDGGWWRQSDOHYQRUVPDWLR
KWVZZ \DQJMLHRRRFRQVXOW \RXU QHDUHW <DQJMLHWHYQVFDH OHV RILFH IRU IXUW